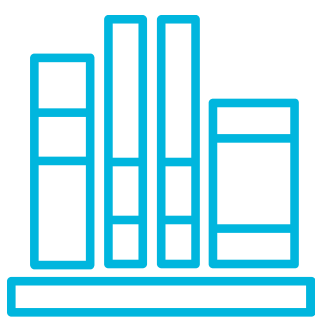


# openEHR Awareness



Welcome to study the openEHR Awareness course! Active communication with the other participants as well as with the facilitator is encouraged while you study the course. Chatting, commenting, and asking questions will help you digest and analyze the topics from several viewpoints. You can naturally also receive a certificate for completion of the course.

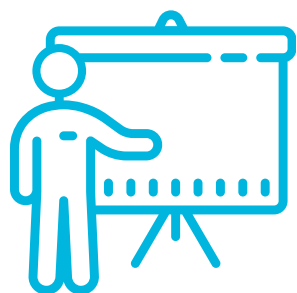
The course will familiarize you with an alternative step-by-step approach of building electronic health and social care records - utilizing application modules from several vendors. You will learn about the international openEHR data model and how it can be used as the basis for electronic health and social care records.



The course will answer questions such as: What do we mean by openEHR-based electronic health and social care record and what kind of benefits it can bring? How does the openEHR-based approach differ from the traditional concept of building electronic health and social care records? How can openEHR facilitate building of cross-organizational care pathways? How do we involve clinical or social care professionals in a central role in developing data concepts and applications? And what kind of references can be found around the globe?

## TRAINING CONTENT

The training is structured as follows:



### Part 1: Introduction

The course facilitator is introduced in this part.

### Part 2: Ever-changing social and health care environment – a platform-based approach as the solution

The social and health care environment is in constant change and so are the system requirements. Traditional approaches cannot cope with the ever-changing requirements, entirely new innovative models and flexible IT are required. This part deals with new types of needs and the disruption taking place in the social and health care IT market. This part also discusses the new platform-driven architecture familiar from other industries and a potential solution to keep up with changing needs. It is based on an open ecosystem concept where data has been separated from applications and applications can be acquired from multiple vendors.



# openEHR Awareness

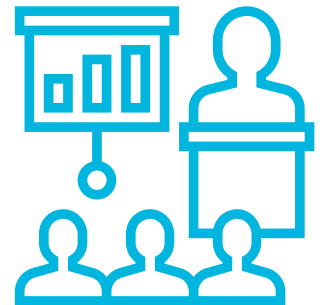


## Part 3: What is an open platform?

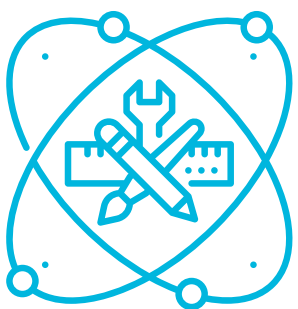
This part concentrates on the details of an open platform which is the key part of the new system architecture. What does an open platform mean and what kind of services does it provide?

## Part 4: What is openEHR?

This part covers the basics of openEHR. How does the openEHR data model look like? How do we search for data based on structured data elements? What is an archetype and what is a template? What is the CKM and how does it look like?



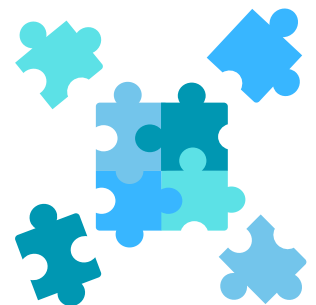
## Part 5: How will system integration change?



openEHR will change traditional system integration remarkably. In this part we will discuss data and process level integration enabled by openEHR and used in parallel with message-based integration. We also focus on the comparison of HL7 FHIR and openEHR. They are complimentary, not competing, and they have their own use scenarios where they fit best.

## Part 6: What does modular openEHR-based EHR mean?

In this part we will learn about the building blocks of an openEHR-based electronic health and social care record and compare it with a traditional monolith. One of the most common concerns while building an openEHR-based EHR is assuring a unified user experience.

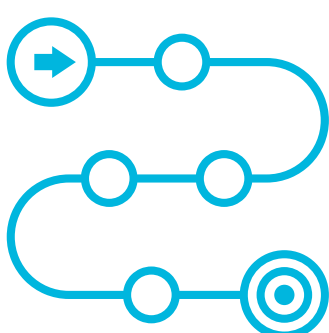
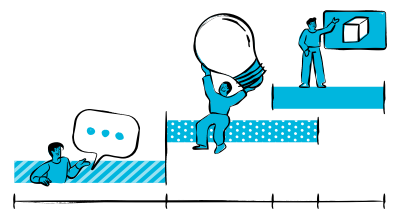


## Part 7: openEHR benefits?

What makes openEHR-based approach attractive? Why is it superior to both healthcare providers and IT vendors building applications and services in this field?

## Part 8: Roadmaps: from monoliths to modules

In this part we focus on roadmaps from old to new. A generic roadmap that has proven to be successful in many international implementations is presented. Roadmaps can also differ based on the needs and priorities of health and social care providers. The procurement module discusses open ecosystem related procurement and how it differs from traditional.



## Part 9: How can openEHR help support care processes?

There are also openEHR specifications for process support. We discuss Task Planning and Guideline Definition Language (GDL2) in this part. Task Planning is about modelling and management of care pathways, GDL2 for clinical decision support.

# openEHR Awareness



## Part 10: openEHR market development

This part describes the openEHR market development in general as well as the evolution of the market from data exchange to modular electronic health records. A model to evaluate market maturity for openEHR is also discussed. Finally, this part covers examples of openEHR projects in various markets. Projects are segmented to openEHR-based data exchange and modular EHR.

## Part 11: Specific openEHR markets in more detail

In this part we explore some markets in more detail, namely the Nordic countries, Spain and the UK. The Nordic countries are forerunners in deploying openEHR. Spain is an interesting emerging openEHR market. The UK is famous for its openEHR-based data exchange, especially in the field of shared care plans.



## Part 12: Cross-border openEHR projects

In Europe we can also find openEHR implementations crossing country borders.

## Part 13: Takeaways from the training

This part concludes the most important takeaways from the training. You will also write your own blog about how openEHR could improve your own work. If it is not applicable in your current role, please select an imaginary role for yourself.

As mentioned, you can also get a certificate of completion!

